

Accessibly Review from:



John Sage
President and Founder
Accessible Travel Solutions, LLC
Website: www.AccessibleTravelSolutions.com
Email: john@AccessibleTravelSolutions.com
Phone: 1-888-313-6606, Ext 109

Travel Weekly's 2016 Tour Operator of the Year

Fully-accessible tours, transfers, FIT packages, and escorted groups in 45+ countries
Learn about NEW products by [signing up for the ATS Newsletter](#)

Sure Shot Accessibility Review:

An ADA-compliant ramp leads up to the front porch where there is flat access into the house. When you enter the house, there is a sitting area on the left (shown below).



On the right there is a door which leads to Bedroom #1. The door is 30 inches wide and is shown below on the left. The closet door is 30 inches wide and is shown below on the right.



There is enough space for a wheelchair on both sides of the bed. The bed is 29 inches tall.



The bathroom door is 30 inches wide



The shower in Bedroom #1 has step to enter it and a sliding door. It has a bench inside, and a wheelchair user might be able to transfer from their wheelchair onto the bench.



Past the shower on the left is the toilet. It has plenty of room to position a wheelchair next to it. The large bathtub (shown below on the right) has a ledge around it which someone may be able to sit on before transferring into the tub. There is also a grab handle next to the master toilet.



The bathroom has two sinks. On the left of the sinks, the counter extends and is high enough so that a wheelchair user could roll up to it with their knees fitting underneath it.



The dining room table has moveable benches and a chair at both ends. To the right of dining room table is the kitchen.



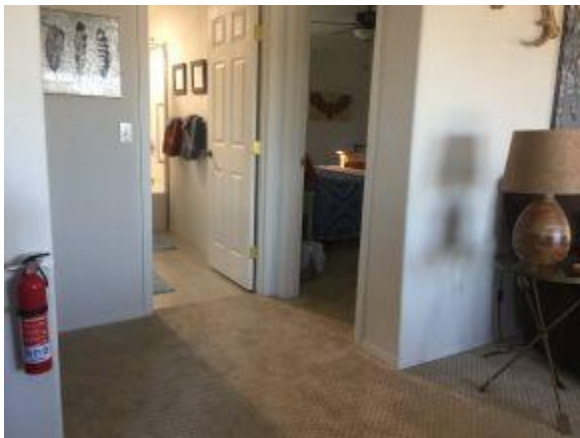
The kitchen has plenty of space for a wheelchair user to navigate. A door 30 inches wide leads into the laundry room.



To the left of the dining room table is another room with more couches and two chairs that can be moved.



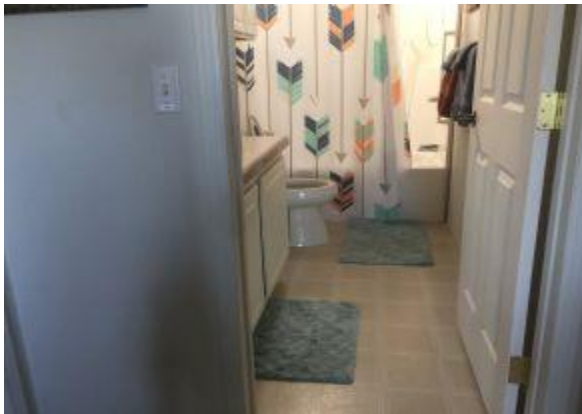
To the left of the sitting area is a bathroom with two bedrooms. The bedroom on the right is shown below. A wheelchair can be positioned on the near side of bed. There is not enough space to roll a wheelchair around to the other side of the bed. The bedroom door width is 30 inches.



The bedroom on the left also has a wide enough door for a wheelchair, and a wheelchair user position themselves on the near side of the bed. The bedroom door width is 30 inches.



Between the two bedrooms is a bathroom. The door is 30 inches wide. A wheelchair can be positioned near the toilet. There is also a grab bar next to the toilet.



The bathtub has a grab bar on the side of the tub and a handheld shower nozzle.

